

Well Monitor - Downhole Gauge

“From Wellhead to Desktop”

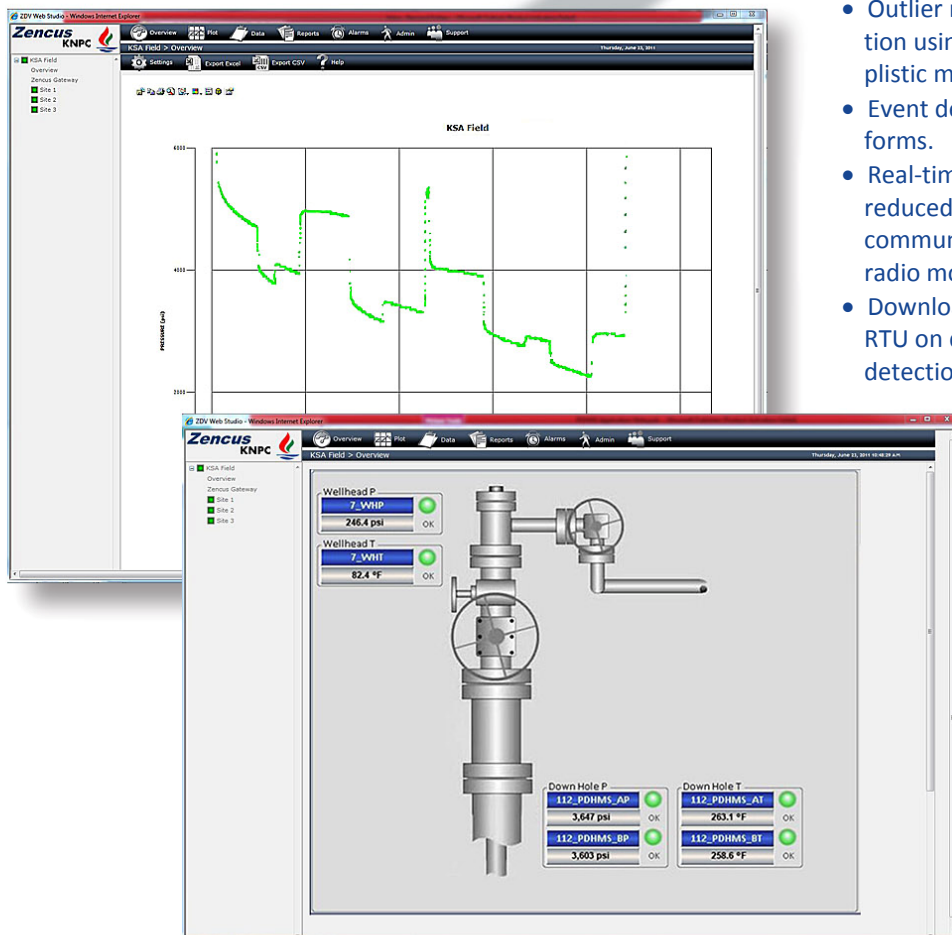
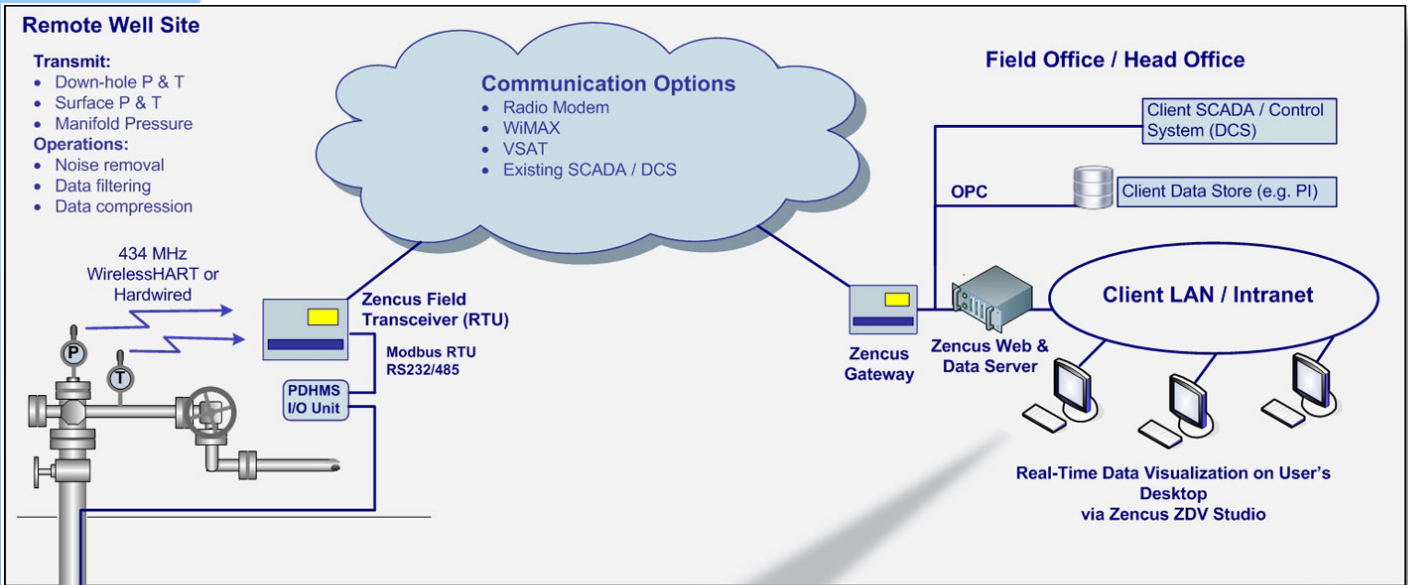


New Features:

- *Local data processing at wellhead*
- *Automatic event detection*
- *Remote filtering and data compression.*
- *Download of high resolution data from High resolution data transmission over narrow bandwidth.*

Zencus Application Note Index

- Well Monitor – Production Well
- Well Monitor - Water Injection
- Well Monitor – ESP Well
- Well Monitor - Gas Lift Well
- Well Monitor – Well Integrity
- Well Monitor – Flow Rate Monitor
- Well Monitor – Multiphase Meter
- Well Monitor – Downhole Gauge
- Facility Monitor - CCTV & Site Security
- Facility Monitor - Hazardous Gases
- Facility Monitor – Cathodic Protection Systems
- Drilling Monitor – CCTV and Data Monitor
- Wireline - Operations Monitor



- Outlier removal, de-noising, data reduction using Wavelet Transforms or simplistic methods.
- Event detection using Wavelet Transforms.
- Real-time transmission of analysed and reduced data using narrow bandwidth communications i.e. TETRA, VSAT or radio modem.
- Download of high resolution data from RTU on demand or automatically on detection of an event.

- Web-based software.
- Intuitive and easy to use.
- Real-time plotting, graphing and trending.
- Event notification and diagnostic messages by email and SMS text message.

“From Wellhead to Desktop”