

## Well Monitor - Multi-Phase Flowmeter

*“From Wellhead to Desktop”*



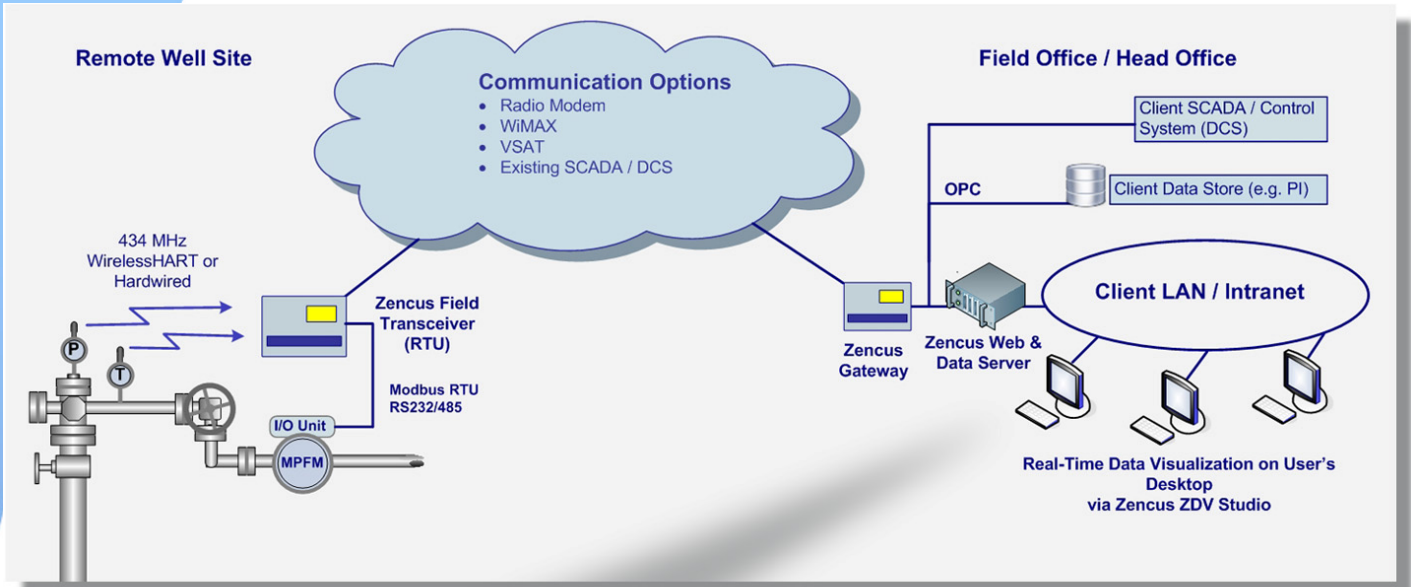
### Features:

- Interfaces with most third-party multiphase flow meters.
- Remote web-based data delivery.
- Quick and easy to install.



### Zencus Application Note Index

- Well Monitor – Production Well
- Well Monitor - Water Injection
- Well Monitor – ESP Well
- Well Monitor - Gas Lift Well
- Well Monitor – Well Integrity
- Well Monitor – Flow Rate Monitor
- Well Monitor – Multiphase Meter
- Well Monitor – Downhole Gauge
- Facility Monitor - CCTV & Site Security
- Facility Monitor - Hazardous Gases
- Facility Monitor – Cathodic Protection Systems
- Drilling Monitor – CCTV and Data Monitor
- Wireline - Operations Monitor



**Zencus WebView**  
Wireless Data Acquisition

Home Help Support Log Out

Active Well: **BRRI-95 HNIF**

MPFM System Alarm: **OK**

Venturi DP: **95 DIFF\_P: 1.2 psi**

Line Pressure: **95 LINE\_P: 3,541.2 psia**

Line Temperature: **95 LINE\_T: 281.6 °F**

Volumetric Flow Rate Line Conditions - Oil: **95 OIL\_FLOW\_LINE: 237,999 bbl/d**

Volumetric Flow Rate Line Conditions - Water: **95 H2O\_FLOW\_LINE: 0 bbl/d**

Volumetric Flow Rate Line Conditions - Gas: **95 GAS\_FLOW\_LINE: 42.7 Mcf/d**

Volumetric Flow Rate Standard Line Conditions - Oil: **95 OIL\_FLOW\_STD: 267,511 bbl/d**

Volumetric Flow Rate Standard Line Conditions - Water: **95 H2O\_FLOW\_STD: 0 bbl/d**

Volumetric Flow Rate Standard Line Conditions - Gas: **95 GAS\_FLOW\_STD: 966.5 Mcf/d**

Water Liquid Ratio Line Conditions - WLR: **95 WLR: 0 %**

Gas Oil Ratio Standard Conditions - GOR: **95 GOR: 94.2 scf/sbbl**

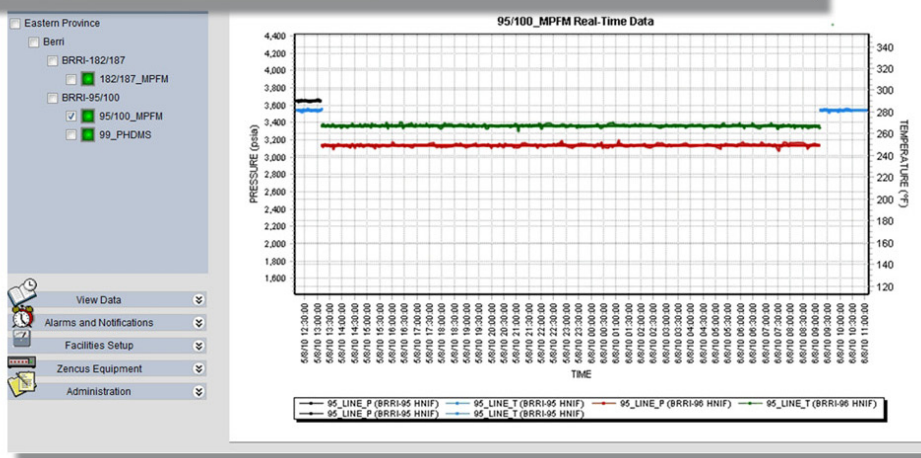
Change Active Well: **BRRI-100 HDRY**

**Alarms**

- Power
- HART And ANALOG Modem
- HART Transmitter
- Analog Transmitter
- No Gamma Source Detected
- Gamma Detector Error
- System File (dafc.cnf)
- System File (scada.cnf)
- Com Port 1 Error
- Com Port 2 Error
- Com Port 3 Error
- Com Port 4 Error
- Communication Status

95/100\_MPFM  
Multi-phase Flowmeter

- Web-based software.
- Intuitive and easy to use.
- Real-time plotting, graphing and trending.
- Alarms and diagnostic messages by email and SMS text message.



*“From Wellhead to Desktop”*